



Mulberry Chapter Block Builders

Fractions Block (8.5" unfinished)

I will provide the sashing/background (BG) fabric for this swap.

Unfinished size of block we are trading is 8.5".

One Block consists of (2) 8.5" rectangle and (1) 5.5" x 8.5" rectangle

Cutting Instructions For Four Blocks

- (2) 2" WOF Fabric
- (1) 5.5" WOF Fabric

Directions

- Sew one 2" strip to each side of the 5.5" strip.
- Sub-cut into 8.5" sections.
- Press seams open to the sashing.
- Trim down to 8.5" square (if necessary).

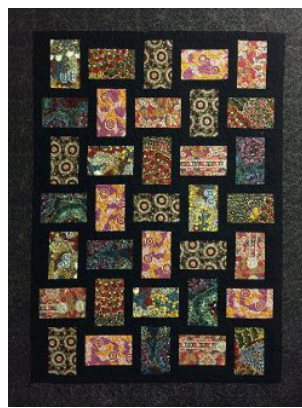
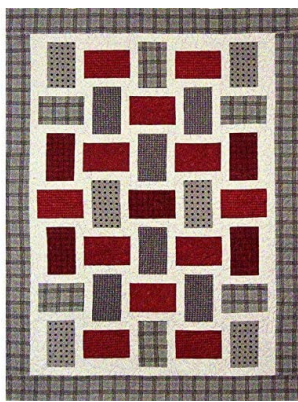
You should get at least 4 blocks, 5 if fabric is wider from one strip set.

Turn In: Probably in September. We are putting program on hold through the summer.

We will turn in and swap the blocks during the meeting. If you can't attend the meeting, please give your blocks to Betty Baker (or another member like Ginger or Tina) ahead of time. No Problem. You will receive your blocks at the next meeting you are there.

Please note to make the quilts below take 42 blocks!

A SET is 5 of the same fabric. DO NOT make more than 5 blocks using the same fabric.



More about [Block Swaps](https://www.shadywoodquilts.com/p-swap-blocks.htm) <https://www.shadywoodquilts.com/p-swap-blocks.htm>