



Shadywood Quilts

Batting Rack



The Shadywood Quilts Batting Rack is designed to conveniently dispense a standard 96" roll of batting, while fitting underneath a long-arm quilting machine or folding table. It includes a cutting surface for a rotary cutter, as well as a measuring tape.

Material List

- 1 - 4 x 8 sheet 3/4" Oak plywood
- 1 - 72" x 1-1/4" Wooden closet rod.
- 4 - 2" Locking wheels with mounting screws
- 1 - 5-1/2" x 52" x 1/4" Delrin plastic sheet
- 1 - 12' measuring tape and #8 x 2" mounting screw
- 8 - 1/2" stainless wood screws

Note: One source of Delrin ("Natural Extruded Acetal Plate") is InterstatePlastics.com.
<http://www.interstateplastics.com/Natural-Extruded-Acetal-Plate-Sheet-ACENE.php>
(The sheet above will cost about \$35.)
Alternatively, an old rotary cutter mat could be used instead.



Shadywood Quilts

Batting Rack

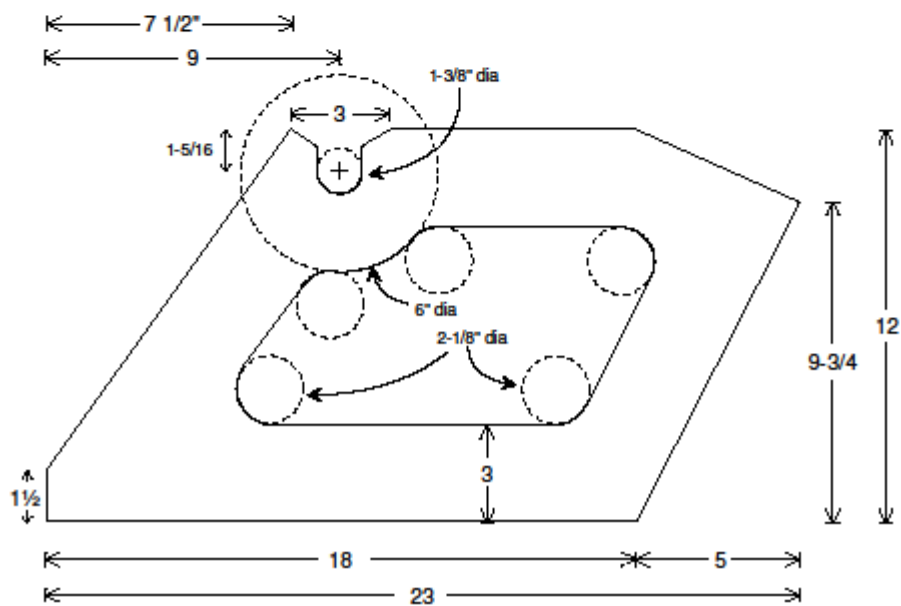
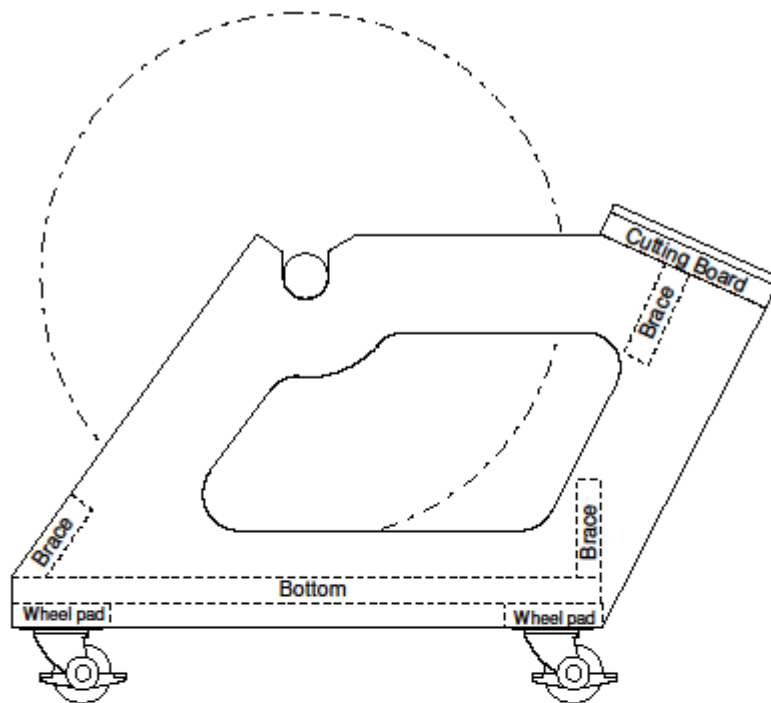
Assembly Instructions

1. Cut the sheet of plywood to 52" and then cut out the parts as indicated on the plywood layout sheet.
2. Using the dimensions from the side view sheet, draw the layout lines on each side panel. The corners of the interior cutout are 2-1/8" holes cut with the same size hole saw that is sold for cutting doorknobs.
3. The hole for the closet rod is 1-3/8", to accommodate a standard 1-1/4" closet rod. You can use a compass or large 6" coffee can to draw the radius in corner near the closet rod.
4. Use a jig saw to finish cutting the side panels.
5. Use a side panel to establish the bevel angle of the back brace on your table saw and then cut the back brace bevel.
6. Use a router to round all the exposed edges that will not be glued, then sand all parts with an orbital sander and 150 grit. Use a 3/4" sanding drum in your drill press to sand the side cutouts.
7. Assemble the wheel pads to the corners of the bottom using glue and a pneumatic brad nail gun.
8. Assemble the left side and right side to the bottom, in the same manner, with glue and brads.
9. Assemble the cutting board to the sides.
10. Install the braces.
11. Cut the closet rod to 60".
12. Use a nail set to set the all brads, and then fill the brad holes and edge voids with wood filler.
13. Finish sanding by hand, then stain and finish as desired.
14. Install the wheels.
15. Install the rotary cutter mat on the cutting board using small 1/2" wood screws, near the top of the mat. (You'll need to be careful not to hit them with your rotary cutter while cutting batting, but we could not find a glue that would work long-term for this purpose).
16. Install the measuring tape by replacing a screw in the corner of the tape with a long #8 wood screw, drilled and screwed to the edge of the cutting board, as you see in the pictures. You probably have some common batting lengths that you use for different sizes of quilts. It's helpful to use a magic marker to highlight those measurements on the tape, so that you can see them from a distance. We have such marks at 70", 86", 102", and 112".



Shadywood Quilts

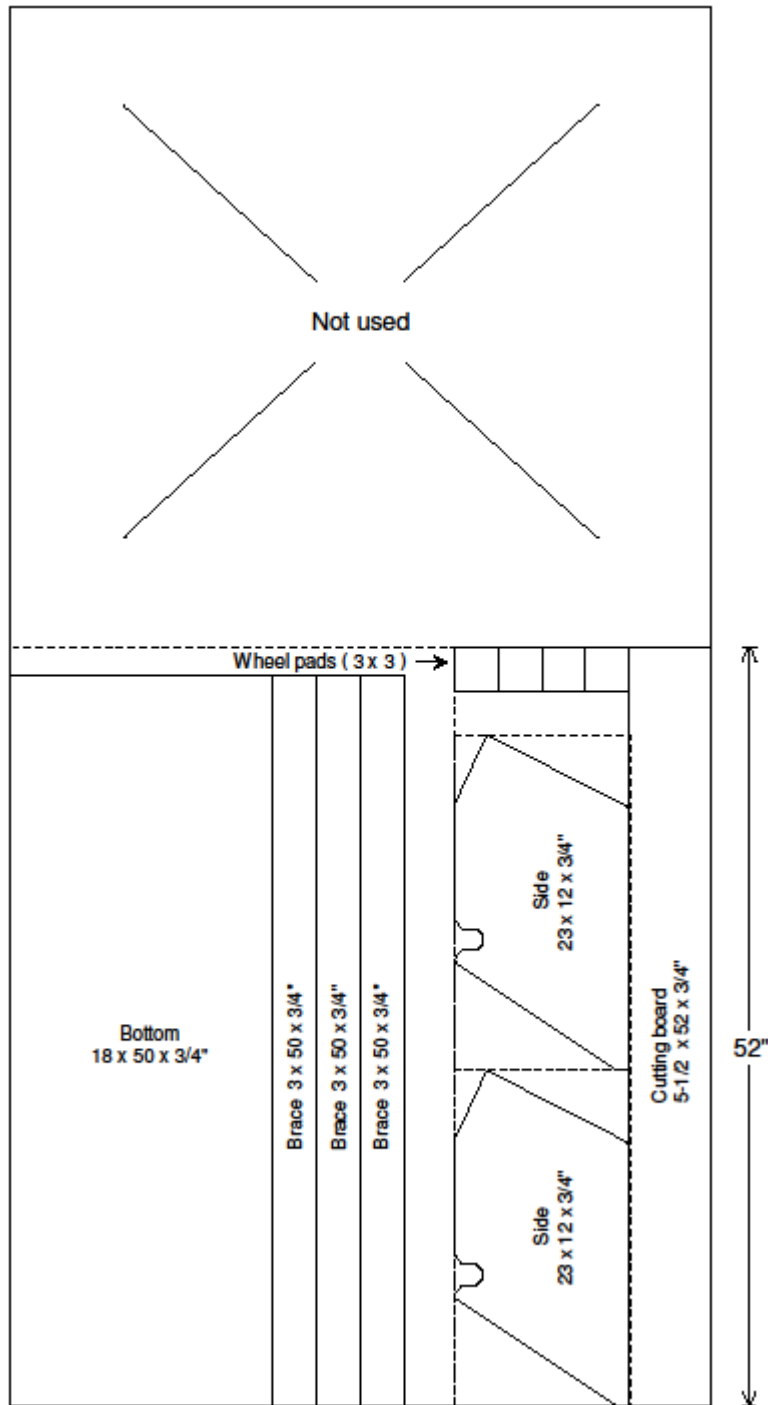
Batting Rack





Shadywood Quilts

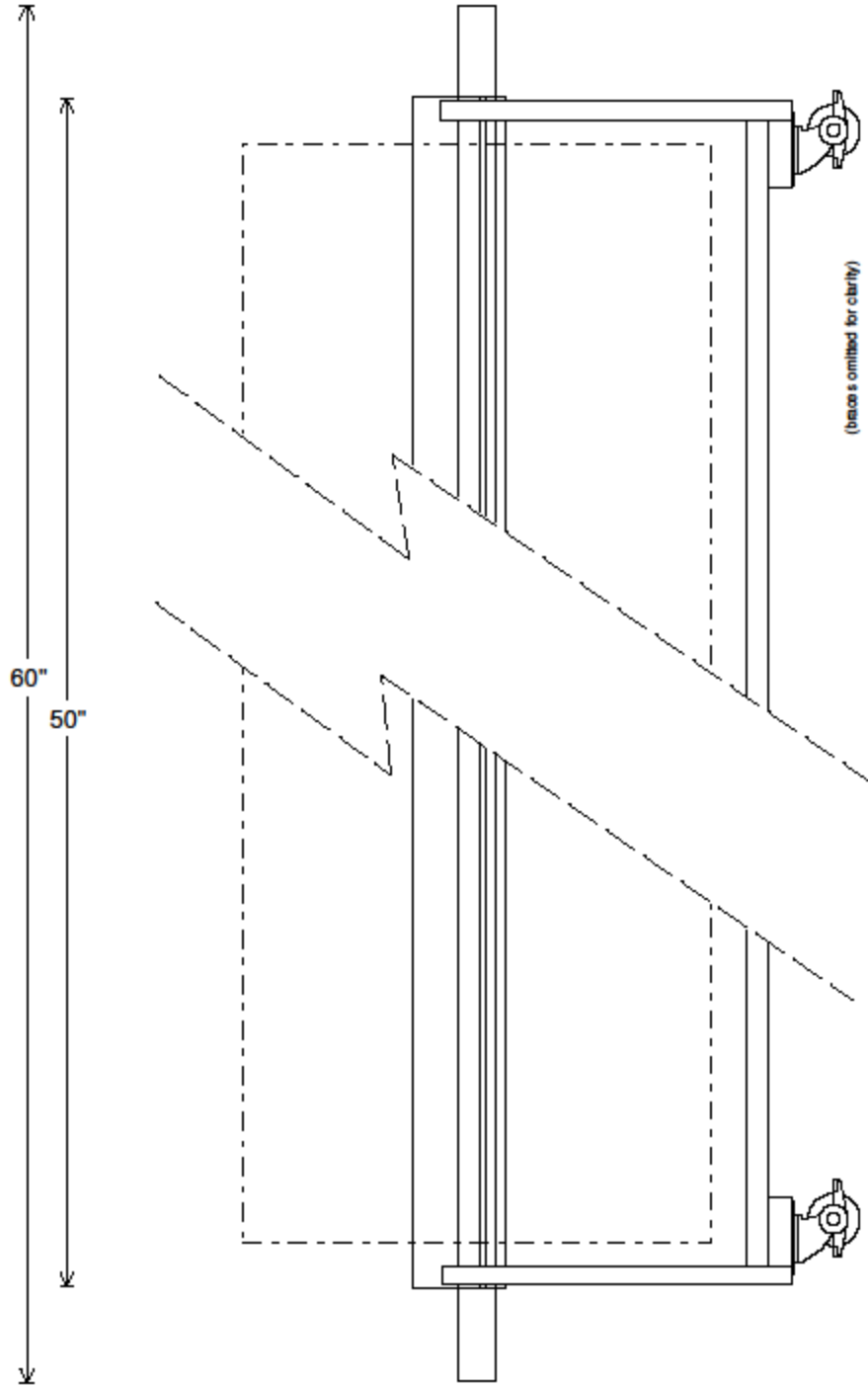
Batting Rack





Shadywood Quilts

Batting Rack





Shadywood Quilts

Batting Rack

